

3 PowerValue 11LI Up

A line-interactive UPS to suit all pockets



Intended for users with lower power requirements, the line-interactive PowerValue 11LI Up delivers from 600 up to 2,000 VA electrical power, making it the ideal UPS for modest IT applications. As well as intervening within 2 to 6 ms to power your application when mains power is lost, the PowerValue 11LI Up also filters out input power disturbances such as surges, line noise or brownouts. If the input power factor starts to play up, the PowerValue 11LI Up will automatically correct it.

This UPS solution has been created to make life easy for the user:

- An intuitive touchscreen display allows parameters to be read with the minimum of fuss.

Enhanced runtime

- Up to four minutes autonomy with typical IT load
- High quality batteries ensure stable performance over years
- Minimize the costs related to battery maintenance and replacement

Compact size

- Small footprint
- Easy to place nearby a laptop or monitor

- USB and RS232 interfaces give access to the outside world.
- Dedicated RJ11/RJ45 sockets protect connected telecoms devices.

The UPS's internal enhanced-runtime batteries are designed to give you stable, low-maintenance performance over many years of service. When they eventually have to be replaced, this can be done without opening the cabinet. The slot to access the batteries is located at the bottom. A comprehensive battery management suite and fan cooling ensure batteries are not overloaded and that they do not overcharge, discharge too deeply or overheat.

Easy battery replacement

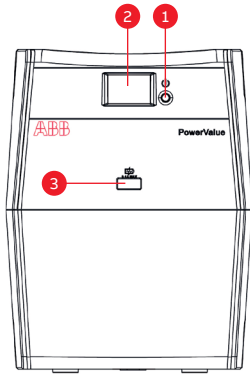
- Change your battery in seconds
- Easy and safe access to the internal battery
- No need to dismantle the whole cabinet

Touchscreen LCD display

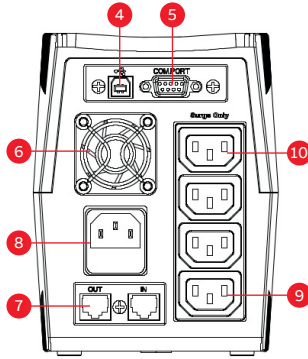
- All information in a tap
- More user friendly than a LED interface

PowerValue 11LI Up 600-2,000 VA

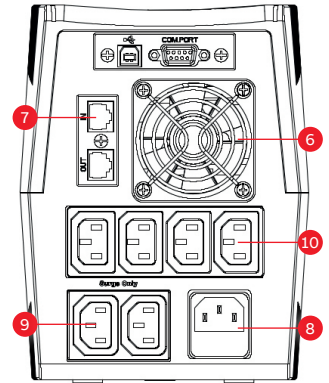
Available models, technical specifications & ordering info



600-2000 VA
Front view



600-800 VA
Rear view



1000-1500-2000 VA
Rear view

1. Standby/line mode button and power LED	4. USB	7. RJ11/RJ45 data protection	10. Backup sockets
2. Touchscreen LCD display	5. RS232	8. AC input	
3. USB charger (5 V, 2 A)	6. Fan	9. Surge only sockets	

Technical specifications

	11LI Up 600VA	11LI Up 800VA	11LI Up 1000VA	11LI Up 1500VA	11LI Up 2000VA
Rated power	360 W	480 W	600 W	900 W	1200 W
Nominal AC input/output voltage	230 VAC	230 VAC	230 VAC	230 VAC	230 VAC
AC input voltage window	170 – 280 VAC	170 – 280 VAC	170 – 280 VAC	170 – 280 VAC	170 – 280 VAC
AC output voltage tolerance	-17.1 % / +15.5% (line mode) +10% (battery mode)	-17.1 % / +15.5% (line mode) +10% (battery mode)	-17.1 % / +15.5% (line mode) +10% (battery mode)	-17.1 % / +15.5% (line mode) +10% (battery mode)	-17.1 % / +15.5% (line mode) +10% (battery mode)
Input Frequency	50 / 60 Hz	50 / 60 Hz	50 / 60 Hz	50 / 60 Hz	50 / 60 Hz
Output Frequency	50 Hz (60 Hz) ± 1 Hz	50 Hz (60 Hz) ± 1 Hz	50 Hz (60 Hz) ± 1 Hz	50 Hz (60 Hz) ± 1 Hz	50 Hz (60 Hz) ± 1 Hz
Efficiency	≥95%	≥95%	≥95%	≥95%	≥95%
Transfer time	2-6 ms	2-6 ms	2-6 ms	2-6 ms	2-6 ms
Battery type	1x7.2 Ah	1x8 Ah	2x7.2 Ah	2x8 Ah	2x8 Ah
Battery recharge time	6-8 hrs	6-8 hrs	6-8 hrs	6-8 hrs	6-8 hrs
Runtime in minutes at typical load (60%)	1' 55"	1' 27"	3' 17"	4' 10"	2' 24"
Ambient temperature	0-40°C	0-40°C	0-40°C	0-40°C	0-40°C
Max rel. humidity	0-90% not condensing	0-90% not condensing	0-90% not condensing	0-90% not condensing	0-90% not condensing
Storage temperature	-20 to 50°C	-20 to 50°C	-20 to 50°C	-20 to 50°C	-20 to 50°C
Net weight	4.1 kg	4.7 kg	7.5 kg	9.8 kg	10.7 kg
Dimensions (WxHxD)	122x160x315 mm	122x160x315 mm	145x190x335 mm	145x190x335 mm	145x190x335 mm

Ordering info table

UPS	Article number	Power (VA/W)	Typical runtime (min)	Dimensions WxHxD (mm)	Weight (kg)
PowerValue 11LI Up 600 VA	4NWP100170R0001	600/360	1'55"	122x160x315	4.1
PowerValue 11LI Up 800 VA	4NWP100171R0001	800/480	1'27"	122x160x315	4.7
PowerValue 11LI Up 1000 VA	4NWP100172R0001	1000/600	3'17"	145x190x335	7.5
PowerValue 11LI Up 1500 VA	4NWP100173R0001	1500/900	4'10"	145x190x335	9.8
PowerValue 11LI Up 2000 VA	4NWP100174R0001	2000/1200	2'24"	145x190x335	10.7